

Historic Building

Corner Location

403 East Market Street
Louisville, KY 40202



Property Features

- + 7,966± square foot building available
 - 3,934± square feet on the first floor
 - 4,032± square feet on the lower level
- + On-site parking
- + Excellent visibility
- + Historic bank building with high 24' ceilings and the original walk-in bank vault
- + Near major downtown attractions such as Slugger Field, the historic Whiskey Row District, KFC Yum! Center Arena and Angel's Envy Distillery
- + High growth area with new apartment communities, hotels and restaurants in the immediate area
- + Daytime population over 95,000 within a one-mile radius

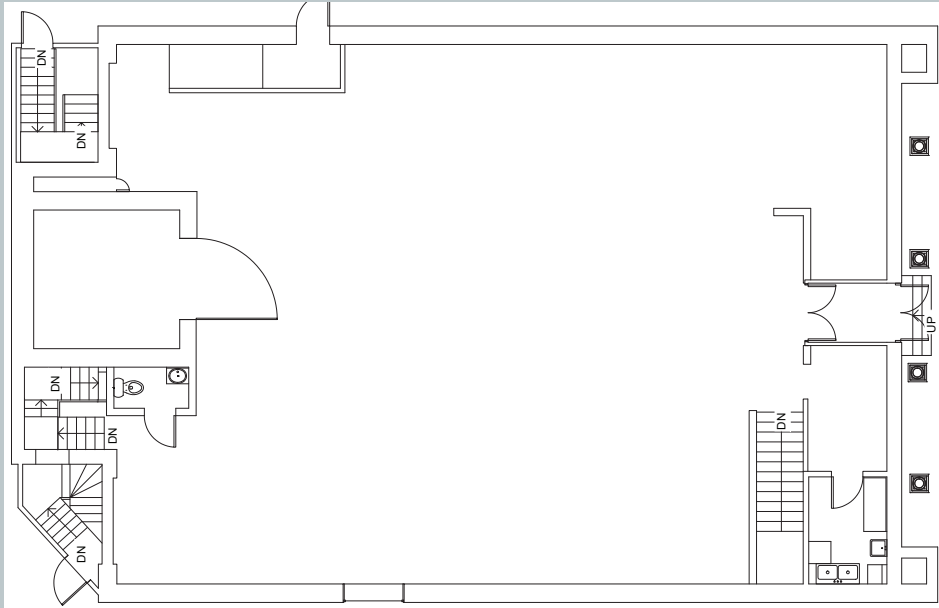


Building Available

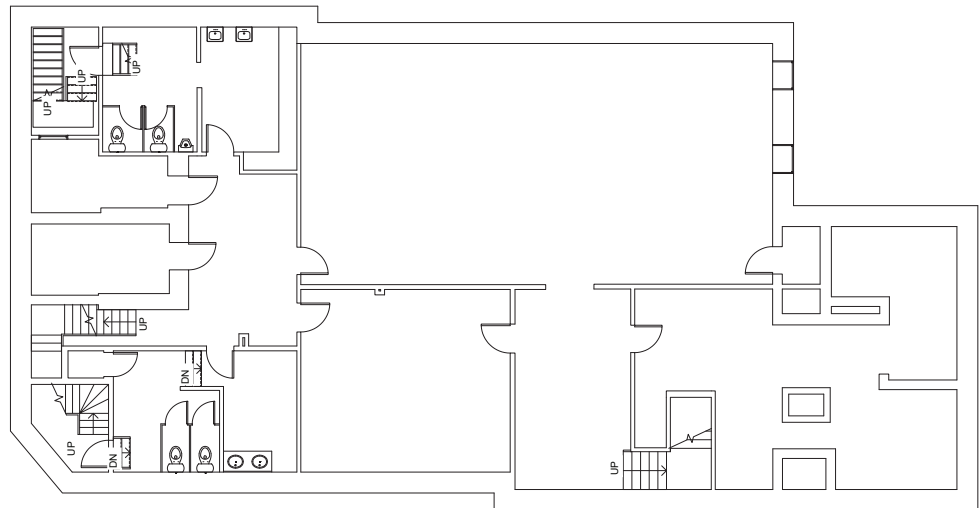
403 East Market Street | Louisville, KY

For Sale

FIRST FLOOR
3,934± SF



LOWER LEVEL
4,032± SF



Contact Us

Clay Hunt

First Vice President
+1 502 412 7607
clay.hunt@cbre.com

Robert Schwartz

Senior Vice President
+1 502 412 7606
robert.schwartz@cbre.com

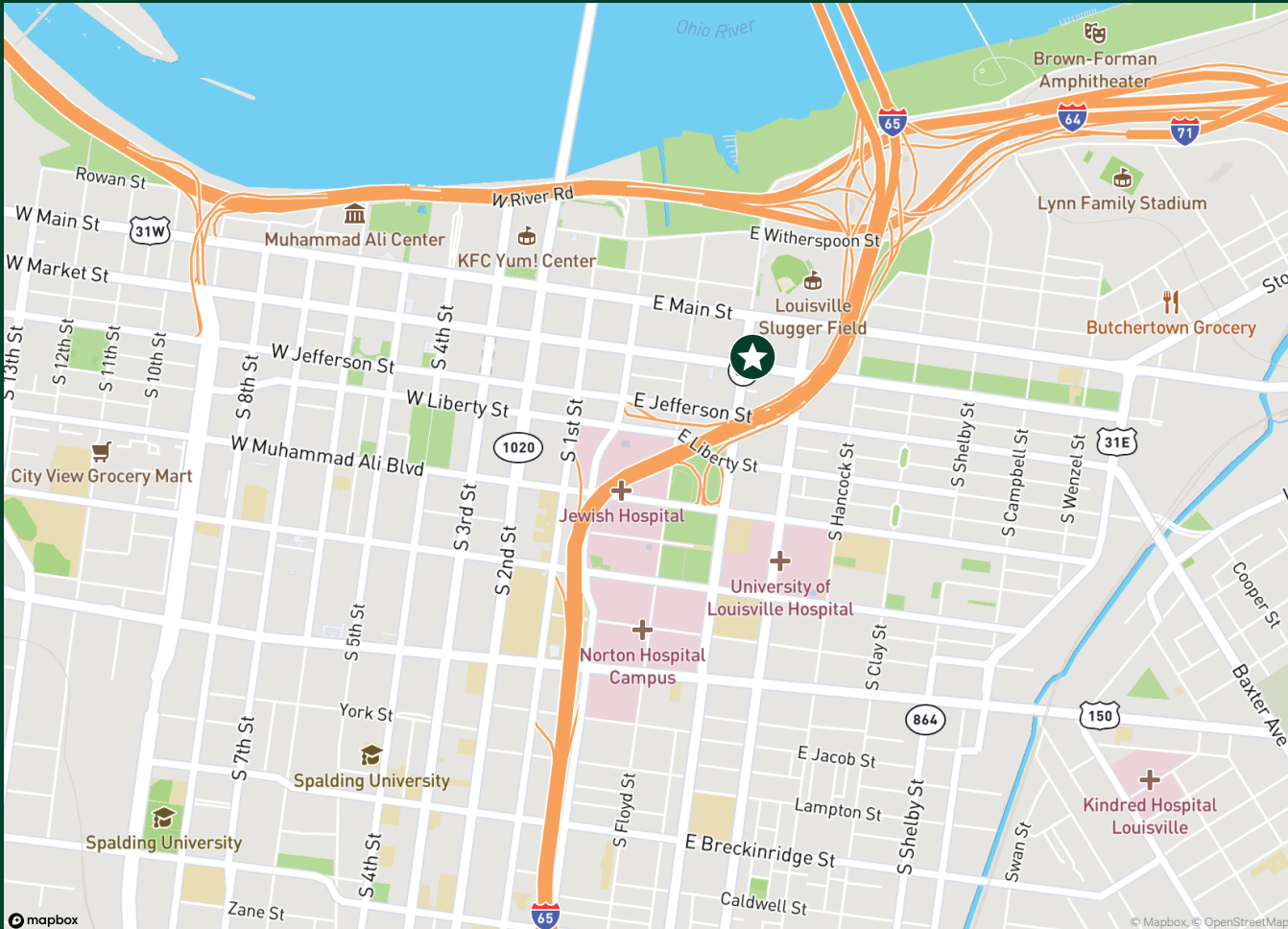
Bryan Schwartz

Associate
+1 502 412 7635
bryan.schwartz@cbre.com

Building Available

403 East Market Street | Louisville, KY

For Sale



2023 Estimated Demographics	1 Mile	2 Miles	3 Miles
Population	10,284	44,146	109,709
Daytime Population	95,063	144,887	211,078
Average Household Income	\$51,644	\$62,170	\$65,502

Contact Us

Clay Hunt

First Vice President
 +1 502 412 7607
 clay.hunt@cbre.com

Robert Schwartz

Senior Vice President
 +1 502 412 7606
 robert.schwartz@cbre.com

Bryan Schwartz

Associate
 +1 502 412 7635
 bryan.schwartz@cbre.com

© 2023 CBRE, Inc. All rights reserved. This information has been obtained from sources believed reliable but has not been verified for accuracy or completeness. CBRE, Inc. makes no guarantee, representation or warranty and accepts no responsibility or liability as to the accuracy, completeness, or reliability of the information contained herein. You should conduct a careful, independent investigation of the property and verify all information. Any reliance on this information is solely at your own risk.